

N.E. 1/4, OF SECTION 18, T.6N., R.1W., S.L.B. & M.

IN OGDEN CITY  
SCALE 1" = 200'

NOTE: P. 95 OMITTED

TAXING UNIT: 25, 359

SEE BOOK 11 PAGE 25

S89°22'5"E 2642.69'

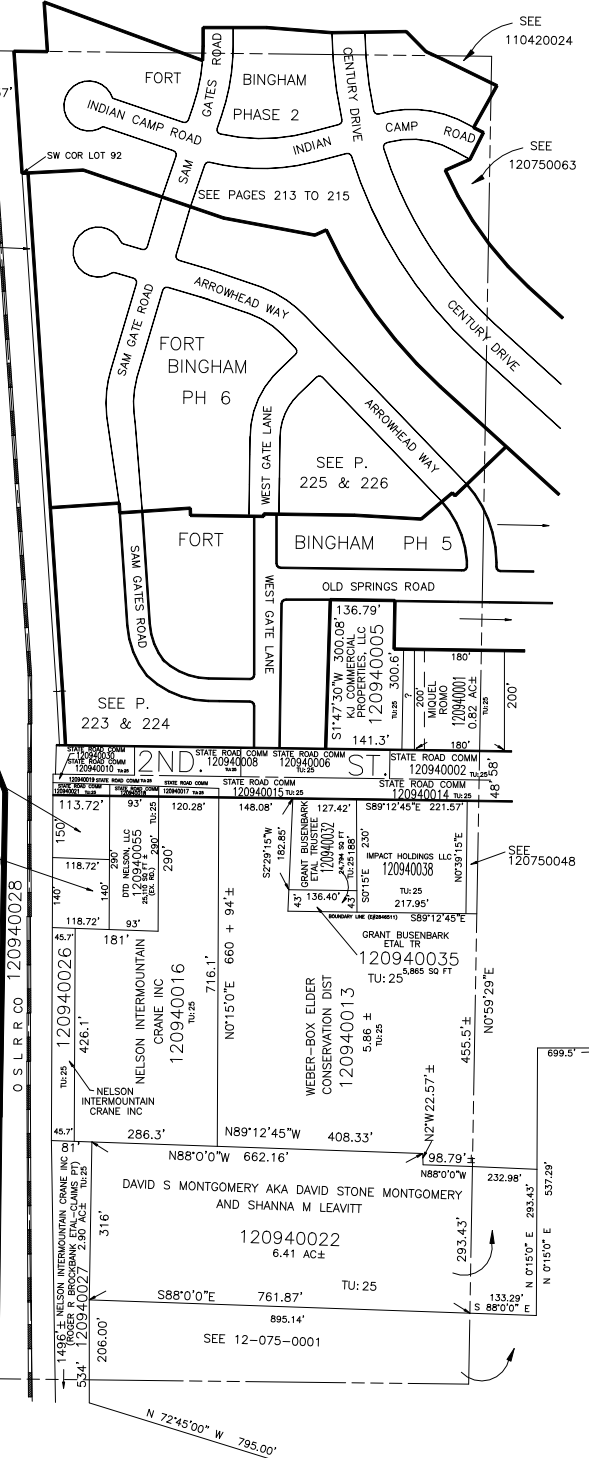
SEE P. 94

OGDEN CITY CORP  
(120940058)  
13,782 SQ FT  
TU:25

DDO ECONOMIC DEV. PROJECT AREA  
N3°51'15"W DEED=4067.37'

JZ ENTERPRISES  
LIC  
(120940020)  
12822 SQ.FT.  
TU:25

(JZ ENTERPRISES LLC)  
120940037  
16,621 SQ FT TU:25



N0°58'48"E 2655.85'

S89°21'0"E 2642.05'

SEE PAGE 96

N 72°45'00" W 795.00'